

## CONTENTS

WARNINGS	1
INTRODUCTION	2
DESIGN INNOVATION	3
INSTALLATION	4
INTERCONNECTS	5
OUTPUT CONNECTIONS	5
IN USE	6-9
ADDITIONAL CD FUNCTIONS	10-16
HANDLING OF CD'S	17
CARE OF THE PLAYER	18
TROUBLESHOOTING	19-21
SPECIFICATIONS	22
OWNERS LOG	23

## WARNING

To prevent fire or shock hazard, do not expose the unit to rain or moisture.  
To avoid electrical shock, do not separate the top and bottom case halves. Refer  
the servicing to qualified **Rega** dealers only.

The laser component in this product is capable of emitting radiation  
exceeding the limit for Class 1.

**CLASS 1  
LASER PRODUCT**



This appliance is classified as a CLASS 1 LASER product.

CAUTION -	INVISIBLE LASER RADIATION WHEN OPEN AND INTERLOCKS DEFEATED. AVOID EXPOSURE TO BEAM.
VORSICHT!	UNSICHTBARE LASERSTRAHLUNG TRITTT AUS. WENN DECKEL GEÖFFNET UND WENN SICHERHEITVERRIEGELUNG ÜBERBRÜCKT IST. NICHT DEM STRAHL AUSSETZEN!
VARNING -	OSYNLIG LASERSTRÅLNING NÄR DENNA DEL ÄR URKOPPLAD. STRÅLEN ÄR FARLIG.
ADVARSEL -	USYNLIG LASERSTRÅLING VED ÅBNING NÄR SIKKERHEDSAFBRYDERE ER UDE AF FUNKTION. UNDGÅ UDSÆTTELSE FOR STRÅLING.
ATTENTION -	RAYONNEMENT LASER ET ELECTROMAGNETIQUE DANGEREUX SI OUVERT AVEC L'ENCLACHEMENT DE SECURITE ANNULÉ.
VARO!	AVATTAESSA JA SUOJALUKITUS OHITETTAESSA OLET ALTTINA NÄKYMÄTTÖMÄLLE LASERSÄTEILYLLE. ÄLÄ KATSO SÄTEESEEN.
ADVARSEL -	USYNLIG LASERSTRÅLING NÄR DEKSEL ÅPNES OG SIKKERHEDSLÅS BRYTES. UNNGÅ EKSPONERING FOR STRÅLEN.

This label is located inside the unit.

## INTRODUCTION

To the best of our understanding, there have only ever been five large multinational companies with the technology and knowledge base to develop the remarkably complex operating software for CD players. Development of this software and chip-sets to operate CD transports was generally curtailed in the 1990's. After this time all development effort was directed towards the design of DVD players and other advanced formats.

Rega and other specialist Hi Fi manufacturers were totally reliant on companies like Sony and Philips to supply transports and their operating chip-sets. In 2003 Sony stopped supply and sent the specialist Hi Fi industry into a flurry of activity in search of feasible alternatives. Many manufacturers were able to resource their supply from Far Eastern companies.

Rega worked hard to locate a British software company who were developing a totally new disc operating system. A system, which was highly advanced, even in the early development stages.

Rega was the only manufacturer to develop the unique new disc operating system. Due to ever increasing computer processing power and memory capacity it was possible to build in an enormous increase in memory capability. This allowed the data retrieval to meet the original CD 'Red Book' specifications without compromise to the musical performance. All previous chip-sets were unable to achieve this due to their limited memory and signal processing capacity.

Rega's new British designed chip set contains over 20MB of memory with 32 bit digital signal processing capacity and Rega has used this computing power to give a far greater musical performance.

We hope you enjoy this very special CD player; we have spent a very long time creating it, drawing on all of our nearly 40 years of experience in specialist Hi Fi manufacturing.

## DESIGN INNOVATION

The **Apollo-R** the latest version of Rega's best selling CD player.

Rega were the last major specialist hi-fi manufacturer to make a CD player. We have used this time to observe the development of the medium.

Rega believed that we should develop our own product that came from our own philosophies concerning sound quality, reliability and value for money.

The **Apollo-R** CD player has a unique sound that harmonises with the rest of our products and we feel offers greater musical performance than the usual HI FI approach.

Our proven top loading design remains for several reasons. Firstly, complex motorised tray mechanisms are vulnerable to wear and therefore a cause of unreliability. Secondly, the use of our underslung transport location allows engineers immediate access, if service is needed.

Housed in a brand new case the **Apollo-R** draws on the pedigree of the previous incarnations of this model.

## INSTALLATION

Ensure the operating voltage of the **Apollo-R** (stated on the rear) is the same as that of your local power supply.

The **Apollo-R** will work well on most surfaces, such as a shelf, table, stand, or wall bracket.

The **Apollo-R** should be placed to allow adequate access to the lid and aperture. If access is limited there is a danger of scratching the CD when placing it on the ball chuck system.

## INTERCONNECTS

A standard interconnect provides entirely satisfactory performance for the **Apollo-R** CD player.

Audiophiles may wish to upgrade to a more exotic interconnect at a later stage, such as Rega's **Couple**.

## OUTPUT CONNECTIONS

Outputs are made via RCA (Phono) type connector and the 'Toslink' optical connection. The sockets on the **Rega** products are clearly marked to help identify them.

**Line Out:** For output to an audio amplifier.

**Right:** always the lower row and marked in **RED**.

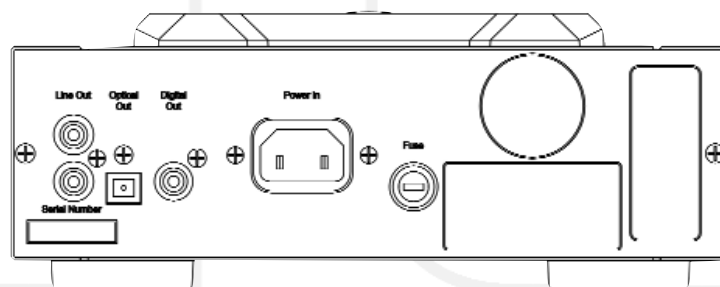
**Left:** always the upper row and marked in **WHITE**.

**! CAUTION: SOME AMPLIFIERS AND INTERCONNECTS HAVE BLACK COLOUR CODING FOR THE LEFT CHANNEL !**

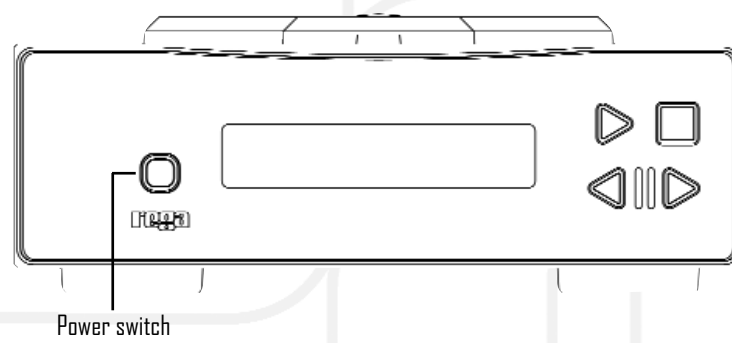
**Digital Out:** for output to digital components such as D.A converter, digital processor, DAT, or MD. Always check that the connecting component is compatible with 44.1k coaxial S/PDIF input)

**IMPORTANT: ALWAYS TURN OFF THE PLAYER WHEN CHANGING LEADS.**

## REAR PANEL CONNECTIONS



### IN USE

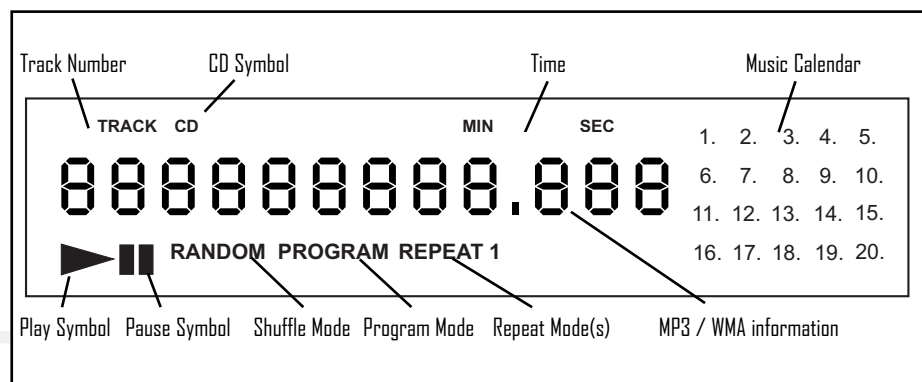


### POWERING UP

Press the power switch on the front panel, the power indication LED on the power switch will illuminate and the display shows 'APOLLO-R'

If there is a disc in the player it will initialise it, the display will show 'INITIALISING'

If there is no disc in the player, "NO DISC" is displayed.



### LOADING A DISC

Open lid and place CD onto three point ball chuck.

Close lid and wait for the player to initialise the disc (initialisation can take up to 12 seconds) this checks to see if its CDA (WAV Red Book), MP3 & WMA format. (The **Apollo-R** locks out both remote and keypad functions whilst initialising the disc until track 1 total time is displayed.)

The display will then show the contents of the disc.

**CDA's** will show - Total number of tracks, total time and the 'CD' symbol.

**MP3's** will show - Total number of tracks, total albums and 'MP3'



**WMA's** Total tracks, total albums and 'WMA' followed by track | album | and zero time.

**MP3/WMA Combination** - Total tracks, total albums and 'MIX' followed by track | album | and zero time.

The **Apollo-R** can handle a maximum of 999 tracks and 99 albums when playing MP3 and WMA, this should be considered when compiling MP3 & WMA disks. The music calendar is active for CDA (WAV) Red book and is not active for WMA, MP3 & MIX.

### **PLAYING OR PAUSING THE DISC**

After disc has been initialised select play function on either the remote or front panel. The disc will start playing from track 1 of the first album on the disc regardless of disc content.

The Display will show:

The play symbol showing that the Disc is playing.

**CDA's** will display track number and time.

**MP3** and **WMA** will show the name of the track, track number and time. It will also show the album (index) number.

**NB: If playing CDR's they must be recorded at no greater than 8x as we cannot guarantee the readability of the disc.**

Once playing the CD you can then activate the Pause function by pressing the pause button on the remote or pressing play/pause button on the front panel. Pause will then hold track position until the play button is pressed on either the remote or front panel.

Once play is activated again the display shows all information about the track and will continue to play from held position.

#### **STOPPING THE PLAYER**

Pressing the stop button on either the remote or front panel will stop the current action and return the player back to track 1 of album 1.

Whilst in 'stopping mode' the player locks out all other functions.

#### **TRACK PREVIOUS**

When pressed while the disc is playing, the current track will start again from the beginning.

Pressing again in quick succession will take you to the start of the previous track.

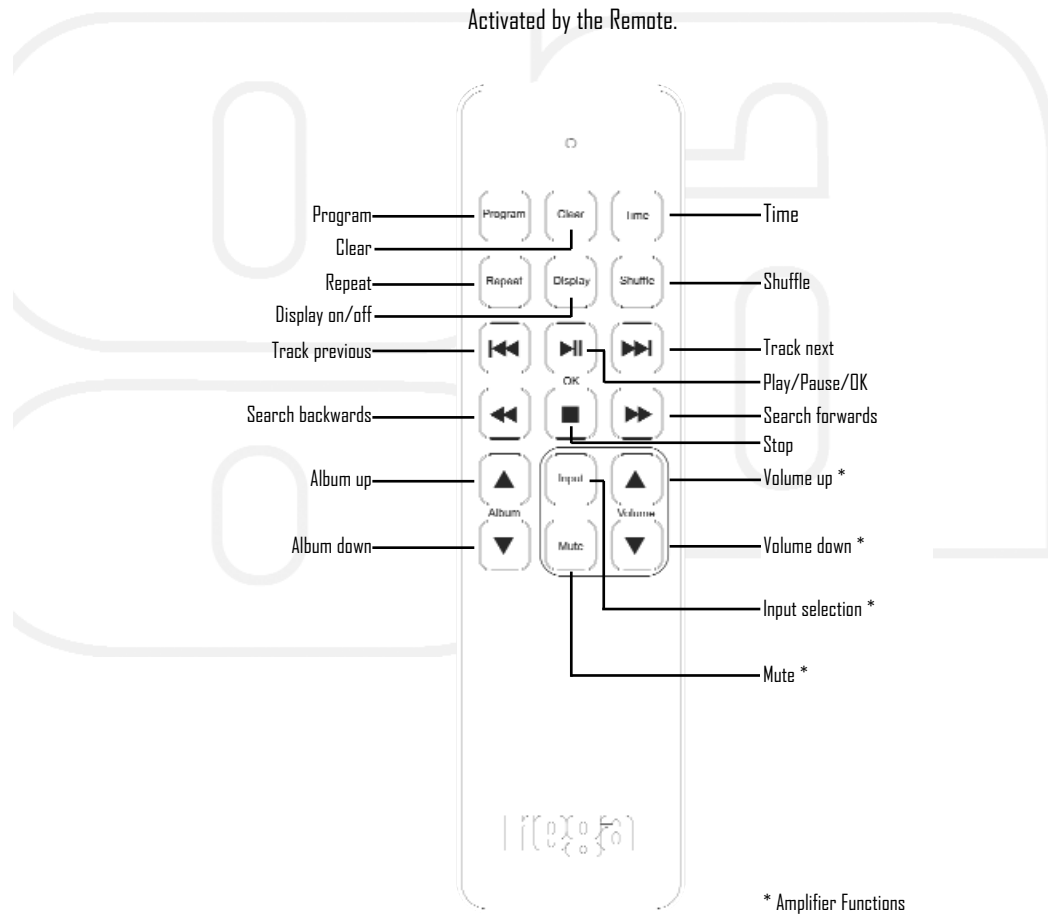
#### **TRACK NEXT**

Pressing once while the disc is playing, the next track will start from the beginning. Pressing again takes you to the beginning of the next track after that, etc.....

If the **TRACK** buttons are pressed in pause and stop modes, a specific track can be selected, and when the **PLAY** button is pressed the selected track will start from the beginning.

### ADDITIONAL CD FUNCTIONS

Activated by the Remote.



## REMOTE FUNCTIONS

The remote control supplied as standard is specific to this model and is necessary to access the advanced functions of the player.

The Rega 'Solar' universal remote will also control all the basic functions of the Apollo-R.

### PLAY, PAUSE, STOP, TRACK PREVIOUS, and TRACK NEXT

The **PLAY** and **PAUSE** buttons on the Remote Control are the same as **PLAY/PAUSE** on the front panel except they have been separated.

Stop, track previous, and track next work in the same way as on the front panel of the player. (See pages 8 & 9.)

### SEARCH BACK, SEARCH FORWARD

Pressing the **SEARCH BACK / SEARCH FORWARD** buttons in play mode, searches the disc at high speed, allowing you to find a specific position in a track.

In pause mode, the track is scanned at a higher speed without playing music. To stop the search press the **SEARCH BACK / SEARCH FORWARD** button again.

### ALBUM UP, ALBUM DOWN

Pressing the **ALBUM UP / ALBUM DOWN** buttons allows you to skip to the next album or previous when playing an **MP3** or **WMA** disc.

### SHUFFLE

To play tracks in a random order press **Shuffle** then press **Play**.

To play tracks in a random order whilst in play mode, press the **Shuffle** button once, '**RANDOM**' will be highlighted, the tracks will be played in a sequence generated by the player.

To cancel shuffle play, press the **SHUFFLE** button again. Play will continue in the discs original sequence, after current track being played has finished.

### REPEAT

To repeat disc press **Repeat**. '**REP ALL**' will momentarily appear and '**REPEAT**' will be displayed.

To repeat a track press repeat twice '**REP TRACK**' will momentarily appear, and '**REPEAT 1**' will be displayed.

To repeat a Album (MP3 and WMA format) press repeat three times '**REP ALBUM**' will momentarily appear, and '**REPEAT**' will be displayed.

Pressing the repeat button will cycle between the various repeat functions.

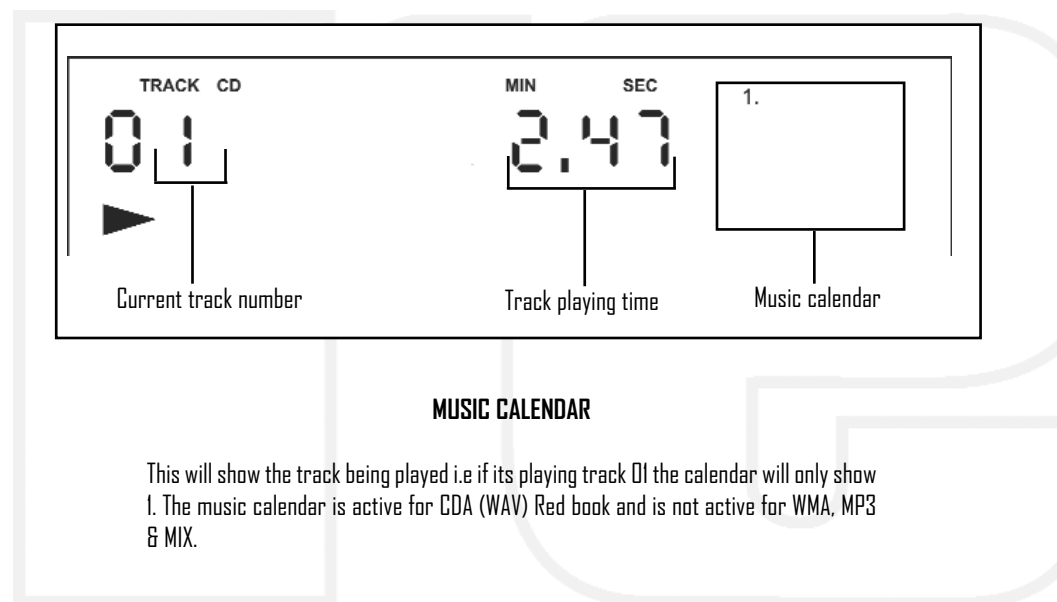
**NB: Please give the Apollo-R enough time to process the information each time a new or different function is selected.**

### DISPLAY INFORMATION WHILST PLAYING A DISC

While Playing a disc, the display shows the play symbol, current track number, playing time, and the music calendar.

The track numbers in the music calendar disappear after they are played.

The **Text** button on the remote can be pressed to show information on WMA and MP3 files.



### MUSIC CALENDAR

This will show the track being played i.e if its playing track 01 the calendar will only show 1. The music calendar is active for CDA (WAV) Red book and is not active for WMA, MP3 & MIX.

#### TURNING OFF THE DISPLAY

Pressing the **'Display'** button on the remote will turn off the display, pressing it again will turn it back on.

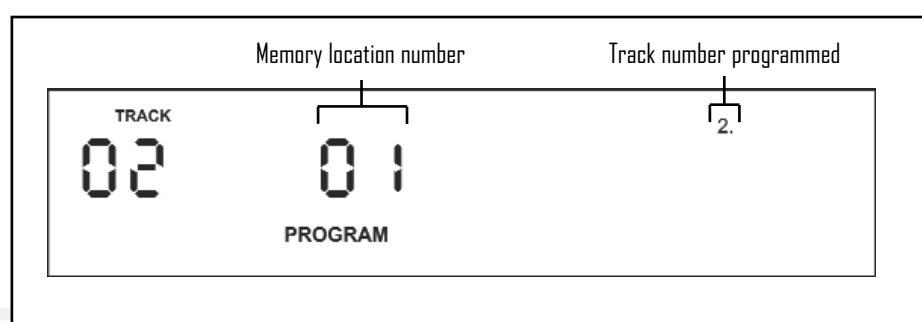
#### DISPLAYING REMAINING TRACK TIME

Checking the remaining playing time of the track is done by pressing the **'Time'** button on the remote whilst the CD is playing. This button can be used to alternate between the track playing time and the remaining playing time of the track.



NB: The **'Time'** function does not work for **MP3, WMA** or **MIX** files.

### CREATING A PROGRAM

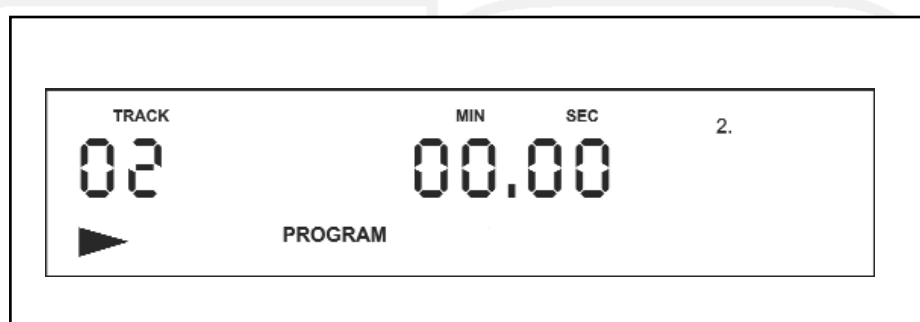


The program function allows you to program up to 99 tracks from a disc or album in any order you specify.

- 1) Press '**Program**' on the remote handset to create your new programme list. "**PROGRAM**" will appear on the display.
- 2) When the first program location appears you can enter the required track number, continue this until your programme is complete up to a maximum of 99 locations.
- 3) Use the **Track next** and **Track previous** buttons to enter the track numbers. Press the '**OK**' button twice after each track is selected.
- 4) If you enter the wrong track number it can be deleted by pressing the clear button. This will clear the last location entered.
- 5) Press '**Program**' again to finish programming.



**CREATING A PROGRAM (continued)**



**6)** Pressing **PLAY** will activate your programme. The display now shows the first track that was entered into your programme.

**7)** If **'Program'** is pressed again you can enter further tracks from the last location in your programme. This can be done either when the **Apollo-R** is playing your programme or when stopped.

**8)** To clear your programme make sure the **Apollo-R** has stopped then press the clear button.

NB: The **'Program'** function does not work for **MP3, WMA** or **MIX** files

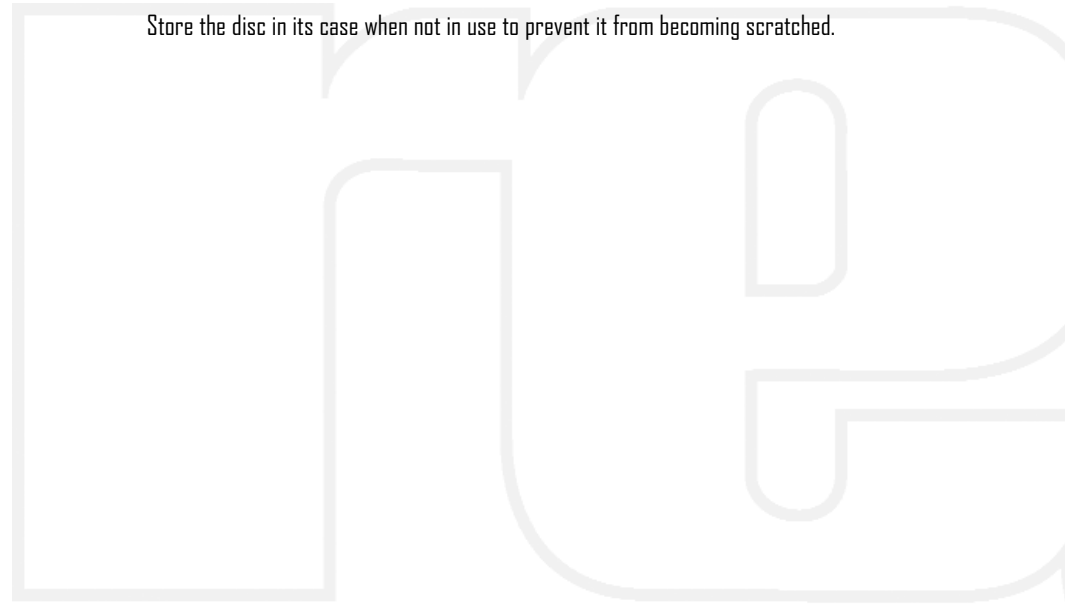
### THE HANDLING OF CD'S

To keep the CD clean, handle by its edge only. Do not touch the surface; natural oils from skin can stop the laser from reading the disc accurately.

Do not expose the disc to bright sunlight, or leave near hot places such as electrical equipment or in a parked car. Excess heat can cause the disc to warp.

Do not use any cleaning fluids or anti-static sprays on the disc, they can damage the disc and the player.

Store the disc in its case when not in use to prevent it from becoming scratched.



## CARE OF THE PLAYER

### WARNING

Misuse of the player could invalidate your Rega warranty.

Do not touch the lens or electronic parts inside the player, it is a very sensitive optical device and is easily damaged. If dirt gets on the lens, the player may not work.

**Do not attempt to clean the lens or lubricate in any way. Fluids and abrasive materials could easily damage the lens. Your Rega dealer will be trained in cleaning this component, but provided you take care with your player, it should not need any servicing.**

Do not leave the lid open, as dust will get into the player and onto the lens.

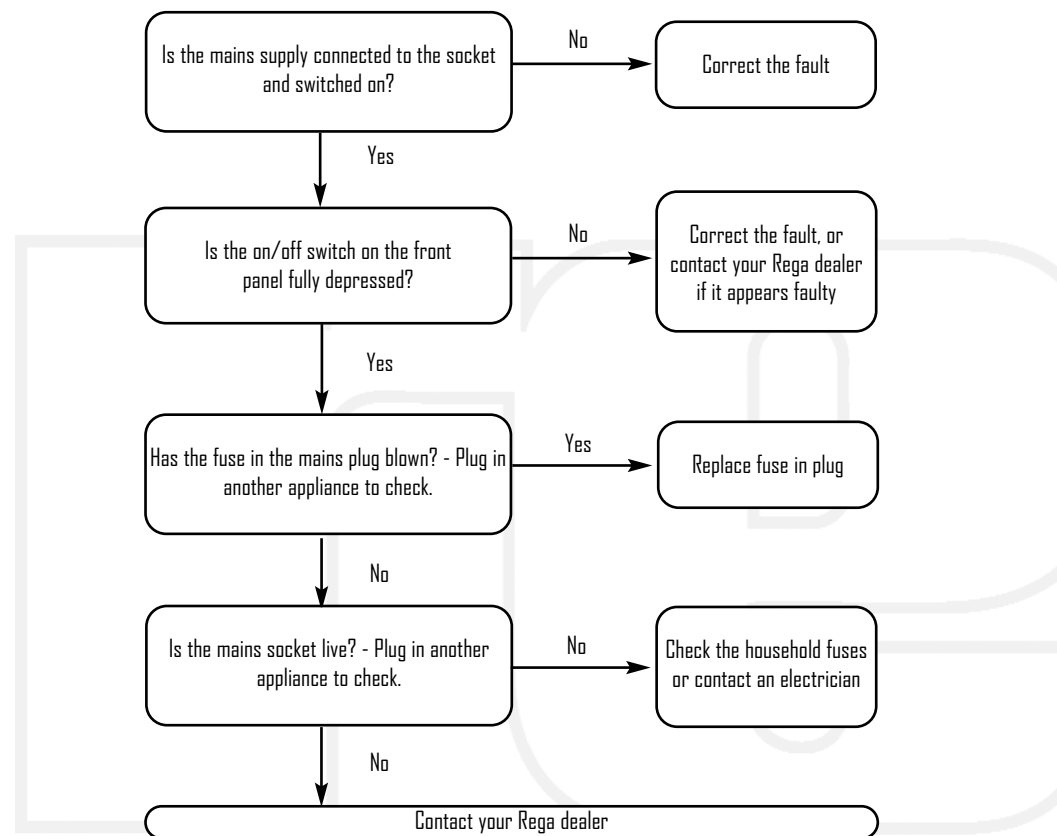
Do not drop objects into the player. If any objects fall into the player, switch off and disconnect from the mains supply immediately, and contact your **Rega** dealer. Do not open the case or stick implements into it to retrieve the item.

If you are not going to use the player for a long time, we recommend that you switch it off.

Always pull the plug itself when disconnecting from the wall socket, never the cord.

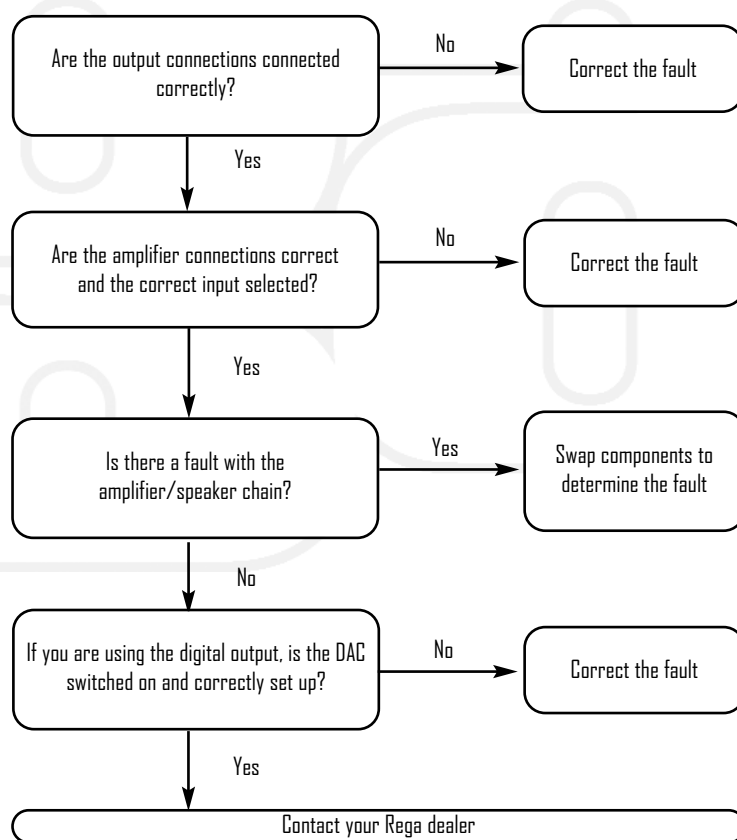
## TROUBLESHOOTING

Power ON - Logo not illuminated



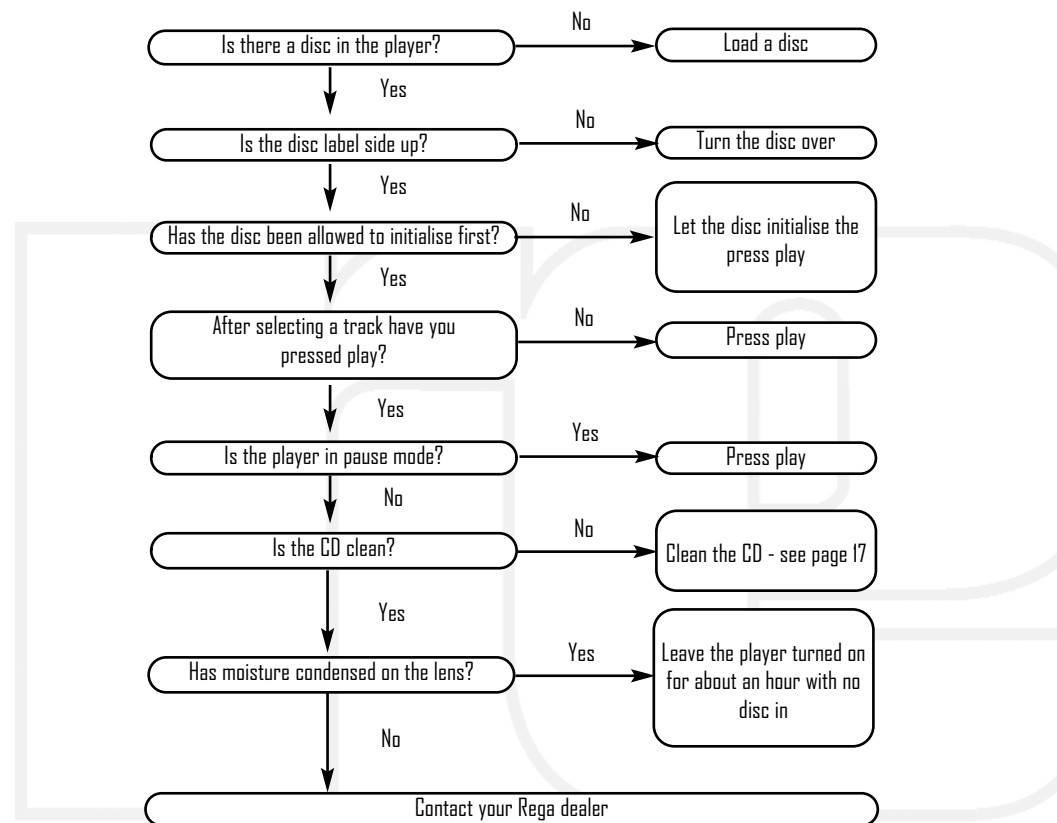
## TROUBLESHOOTING

Power on, No output



## TROUBLESHOOTING

Power on, power switch LED and display on, but CD does not play



## **APOLLO-R SPECIFICATIONS**

**Laser** Semiconductor laser

**Wavelength** 790nm

**Line Output Maximum Level** 2.15V (minimum load impedance 10k $\Omega$ )

**Digital Output Maximum Level** 0.5V (load impedance 75 $\Omega$ )

**Digital Sampling Frequency** 44.1kHz

**Power Consumption:**

13.5Watts at 230V (minimum 190V maximum 253V) @ 50/60Hz

13.5Watts at 115V (minimum 95V maximum 126.5V) @ 50/60Hz

**Dimensions:**

220Wx90Hx315D

**Required Space for operation:**

220Wx180Hx350D

**Mains fuses:**

230V / 20mm / T250mA L

115V / 20mm / T500mA L

**CDP Remote Batteries:**

AAA (1.5) x 2

WARNING: BATTERIES MAY EXPLODE OR LEAK IF RECHARGED,  
DISPOSED OF IN FIRE OR DISECTED.

**OWNERS LOG**

(1)  
Owner.....  
Date.....  
Where Purchased.....

(2)  
Owner.....  
Date.....  
Where Purchased.....

(3)  
Owner.....  
Date.....  
Where Purchased.....

(4)  
Owner.....  
Date.....  
Where Purchased.....

(5)  
Owner.....  
Date.....  
Where Purchased.....