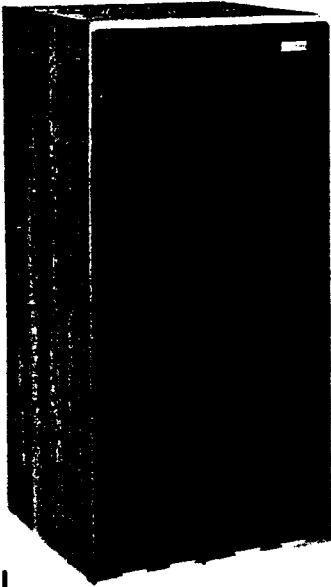


HARBETH ACOUSTICS



MONITORING LOUDSPEAKER TYPE HL

This loudspeaker is a big advance in the art of reproduction. It uses the **revolutionary patented* bass/middle frequency cone made of polypropylene copolymer** which gives much less colouration than either paper pulp or Bextrene cones. Compared with other loudspeakers the sound has a transparency which makes listening much more enjoyable and less tiring.

"This speaker received very good marks from all the panel on nearly all parameters and was particularly liked on classical music. Its clarity and low mid range colouration was particularly noted." *Hi Fi News and Record Review July 1977.*

SPECIFICATION

Dimensions	64cm (25 in) high x 32.5cm (13 in) wide x 30cm (12 in) deep
Axial Frequency Response	50 Hz to 25 KHz \pm 3dB
Max Power Input	100 watts programme peak
Sensitivity	87dB/watt at 1 metre
Nominal Impedance	8 ohms
Input	Terminals, which accept 4mm Wander plugs
Weight	13.5kg (30lbs)
LF Unit	20cm (8 in) diameter, having a special vacuum formed plastic cone of polypropylene copolymer, which has been selected as having the lowest colouration of any known material.
HF Unit	2.5cm (1 in) diameter dome Son Audax unit type HD 12-9, D 25-8 of soft impregnated fabric to reduce colouration at high frequencies.
Cabinet	Vented cabinet specially designed and constructed to satisfy the BBC criterion for distortion from vents; vent resonance 45 Hz. Panels of teak or walnut faced birch plywood as recommended by the BBC are individually mechanically damped to satisfy the stringent BBC criterion for inaudibility of panel resonances thus avoiding the common "boxy" sound. Cavity air mode damping by generous fire-resistant foam.
Crossover Network	Consists of close tolerance air cored and laminated iron inductors and solid dielectric capacitors. Adjustment of the relative levels of LF and HF units is to \pm 1/2 dB by means of a tapped autotransformer in the network. Crossover frequency 2 KHz.

GENERAL

The type HL monitor has been designed in accordance with the best professional standards for quality monitoring purposes. The very high quality of reproduction and the good power handling capacity make it ideal for this purpose as well as for the highest fidelity domestic reproduction.

It is designed as a free standing loudspeaker and is at its best three feet from the walls of a corner and mounted eighteen inches off the floor. Because it has a full bass response, a bass cut may be necessary if it is placed closer than this to reflecting surfaces.

Price	Teak	£135 plus VAT
	Walnut	£136 plus VAT

* Patents applied for in all principal countries.